



**MACHINE VISION SHOP**  
FOR ALL YOUR VISION PRODUCTS



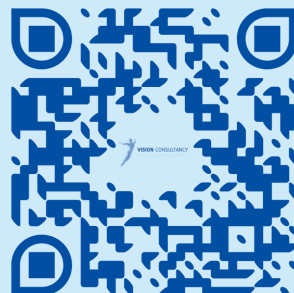
# Cognex mounting

For Cognex fixed ID scanners & smart camera's

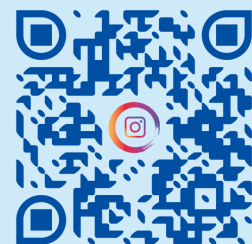


**Machine Vision Shop**

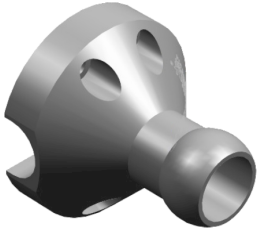
Facebook



Instagram



# Our products



## **SLM-1** Standard Metric Ball Base

The metric gray (SLM-1) ball base has a slotted hole pattern to fit most metric T-slot aluminum extrusions. The through hole in the ball base can be used for routing wires, cables, or small hoses. There is an exit groove out the side of the base for cables, hose, and wires. Recommended hardware (not included) M5 Socket Head Cap Screws. Distance between bottom of ball base and top of ball base mounting surface is 10.49MM

## Standard Metric Ball Base for Aluminum Extrusion **SLM-1-40**

The metric gray (SLM-1-40) ball base has a slotted hole pattern to fit most metric T-slot aluminum extrusions and the base profile is the same width as the aluminum extrusion. The through hole in the ball base can be used for routing wires, cables, or small hoses. There is an exit groove out the side of the base for cables, hose, and wires. Recommended hardware (not included) M5 Socket Head Cap Screws. Distance between bottom of ball base and top of ball base mounting surface is 10.49MM



## **SLM-2** Standard Metric Knuckle

The metric gray knuckle uses a double socket configuration to clamp the ball on a base, link, or sensor mount. The design allows for a large range of motion while maintaining the internal hose and cable routing capability.

## Standard Metric Tee Knuckle **SLM-290**

The metric gray Tee Knuckle was designed to work with a Tee Link to create two branches from one base. These knuckles can also be used to give a full 180° range of motion if you do not need through cable routing.



## **SLM-521-C-DI** Metric Mounting Plate

This metric gray plate mounts to SLM-1, SLM-1-40, and SLM-1XS ball bases.

Fits: **Cognex Dataman 300 & Insight 7000, 7600, 7800**

Swivellink has a mounting plate for almost **every Cognex ID scanner & camera**, we will help you find the correct mounting plate. Contact us at: [sales@vision-consultancy.nl](mailto:sales@vision-consultancy.nl)





SLM-3-50



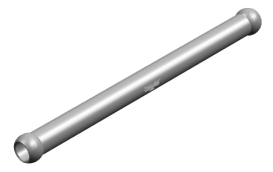
SLM-3-100



SLM-3-150



SLM-3-200



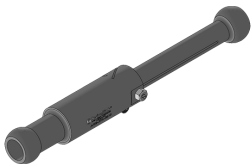
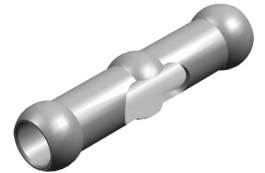
SLM-3-300

### **SLM-3-X** Standard Metric Link

Links are used with knuckles to extend the reach and increase the flexibility. The metric standard series links are available in 5 lengths: 50MM, 100MM, 150MM, 200MM, and 300MM. The second number in the name is representative of the length of each link, for example SLM-3-150 would be a 150mm link.

### Standard Metric Tee Link **SLM-3T**

The Standard Tee Link creates two separate branches when used with a Standard Tee Knuckle gripped on the center ball. The hole in the center ball allows cable and hose routing for each branch.



### **SLM-3TSL-150250** Standard Metric Telescoping Link

The Standard Metric Telescoping Link can be adjusted from 150MM to 250MM to center of ball ends. The hole in the center allows cable and hose routing to run thru the Telescoping link.

### Clamp on Base **SLM-CB**

Standard Clamp on Base includes tightening knob with a plastic protective end on of the tightening screw. The Metric bracket will mount the SLM-1 or SLM-1XS ball bases. Range of grip = 16MM to 35MM



Swivellink mounting solutions for Cognex are also available in imperial and extra small. For more information about these possibilities contact us: [sales@vision-consultancy.nl](mailto:sales@vision-consultancy.nl)





**SLM-4MMT & SLM-CLAMP HANDLE**

Quick and easy mounting with the SLM-4MMT and the SLM-Clamp handle. The Metric 4MM T-handle wrench is used to mount the SLM Standard and XS series Ball Base to all of the metric plates as well as used for the SLM Standard and XS series knuckles. The SLM-CLAMP HANDLE can be used in the Metric Standard and XS series knuckles (SLM-2, SLM-290, SLM-2XS, SLM-2XS90, and the SLM-2-2XS coupler) to make quick adjustments in the positioning of the arms.

# Create your Swivellink mount

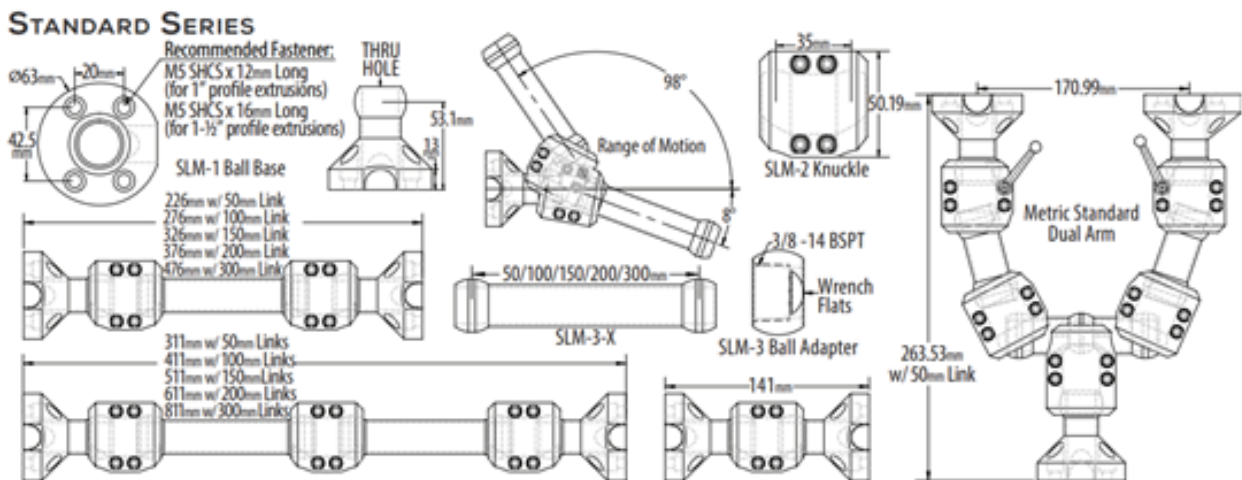


Metric Demo Kit **SLM-DEMO CASE**

The Swivellink metric gray demo kit is a must have for research and development, maintenance, spare parts and showing equipment to a first time user. This demo case includes 2x SLM mounting plates of your choice. For more information about the SLM-Demo Case and it's contents, scan the QR-code or visit [www.machine-vision-shop.com](http://www.machine-vision-shop.com).



# Technical information





# MACHINE VISION SHOP

FOR ALL YOUR VISION PRODUCTS

If you have any questions, need help composing the right mounting solution or you want to order?

Feel free to contact us via e-mail at [sales@vision-consultancy.nl](mailto:sales@vision-consultancy.nl) or visit our webshop.

Our experts are happy to help you.



*Natascha Overhof*



*Christian Cromptvoets*



## **VISION** CONSULTANCY BV

Robert Schumandomein 2  
6229 ES Maastricht  
The Netherlands

+31 (0) 438 522 651

[sales@vision-consultancy.nl](mailto:sales@vision-consultancy.nl)  
[www.machine-vision-shop.com](http://www.machine-vision-shop.com)

Machine Vision Shop

